



## Valve meter coax "ECO" for installation on concealed valves

Co-axial version "ECO" - armature and coax cartridge  
for modular radio, M-Bus and radio systems

- Especially for installation on apartment shut-off valves
- The shut-off device is elegantly integrated in the meter armature
- Cold water 50°C, warm water 90°C
- Pre-equipped for radio, M-Bus or pulse

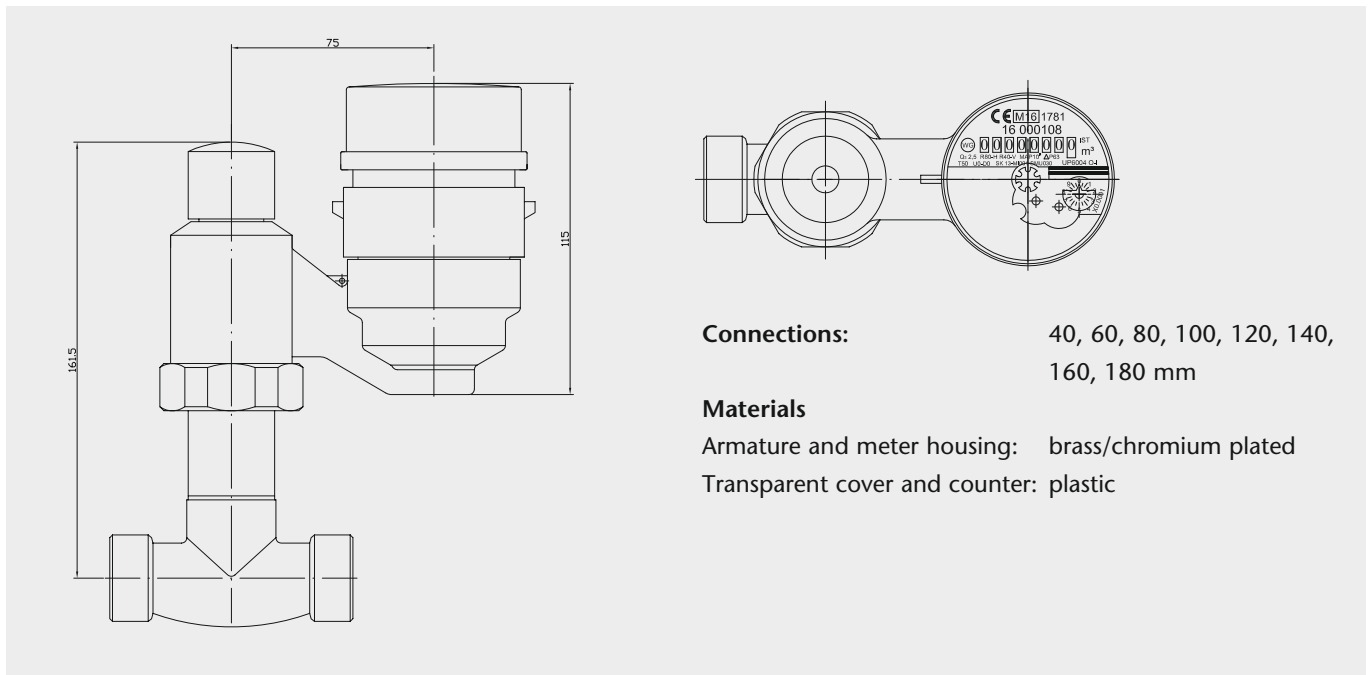




## Technical data: valve meter coax "ECO"

### VTZ coax ECO

Temperature	T		50, 90
Connection	mm		DN15, DN20, DN 25
Minimal flow rate	Q <sub>1</sub> H	m <sup>3</sup> /h	0.03125
	Q <sub>1</sub> V	m <sup>3</sup> /h	0.0625
Transitional flow rate	Q <sub>2</sub> H	m <sup>3</sup> /h	0.05
	Q <sub>2</sub> V	m <sup>3</sup> /h	0.1
Permanent flow rate	Q <sub>3</sub>	m <sup>3</sup> /h	2.5
Overload pressure	Q <sub>4</sub>	m <sup>3</sup> /h	3.125
Measuring range	Q <sub>3</sub> /Q <sub>1</sub>	H	80
	Q <sub>3</sub> /Q <sub>1</sub>	V	40
Ratio	Q <sub>2</sub> /Q <sub>1</sub>		1.6

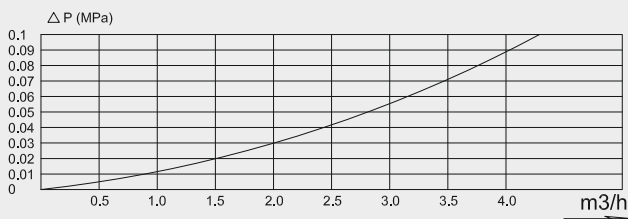


**Connections:** 40, 60, 80, 100, 120, 140, 160, 180 mm

#### Materials

Armature and meter housing: brass/chromium plated  
Transparent cover and counter: plastic

### Pressure loss curve



### Error curve

